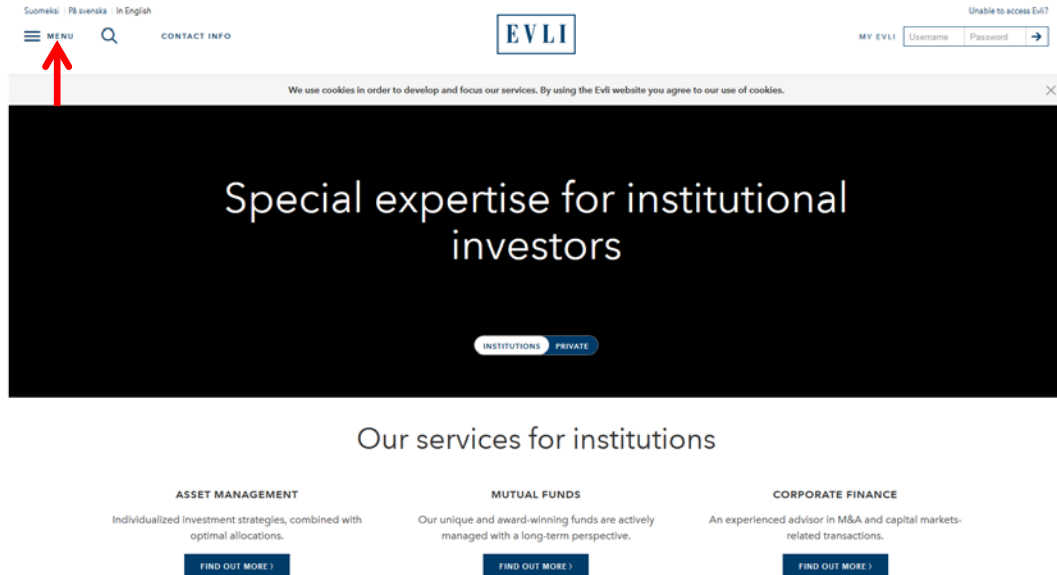




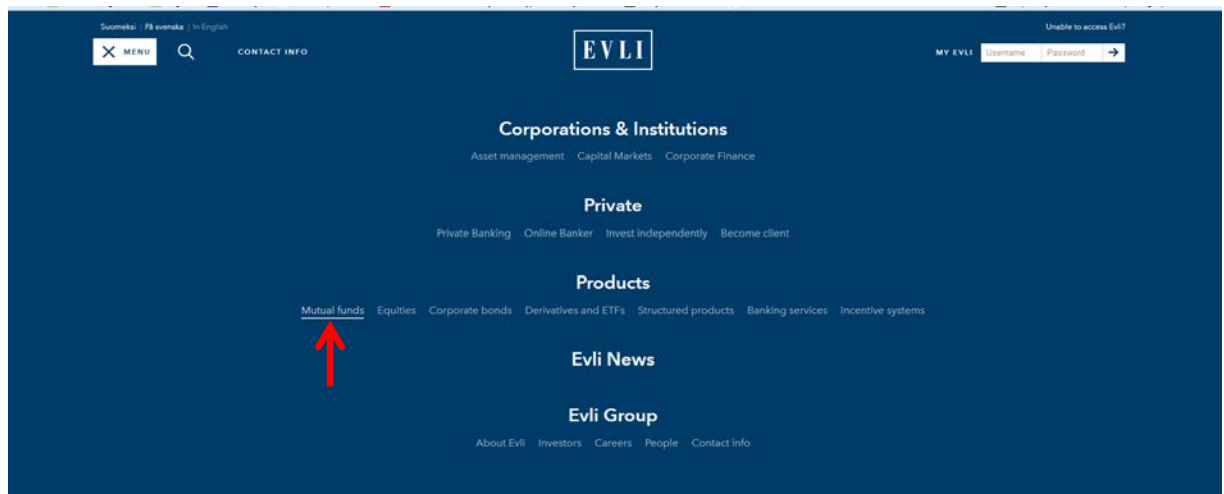
Converting the CSV file to make it easy to read

www.evli.com

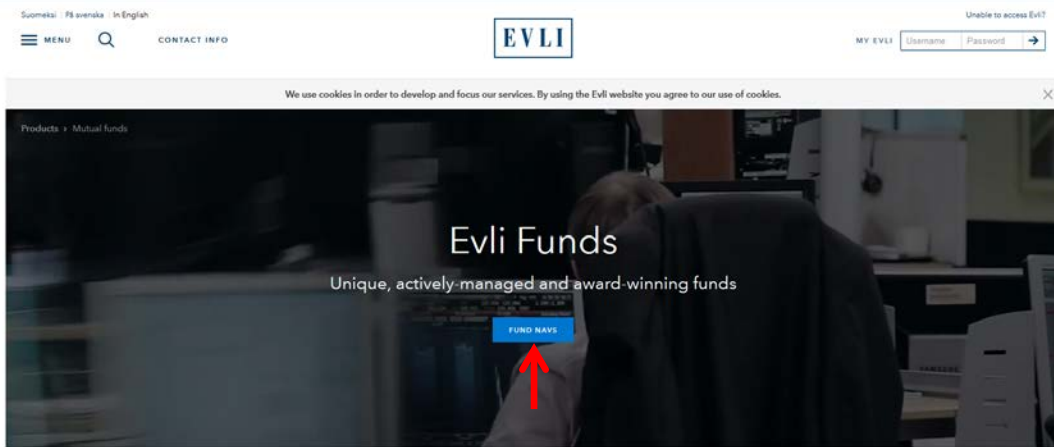
1. Select: Menu



2. Select: Mutual funds (under the Products)



3. Select: **FUND NAVS**



Highest degree of usage among institutional investors in our core market Finland

Our investment process is systematic and characterized by both quantitative methods and qualitative assessments. Rigorous discipline ensures repeatability of the investment process. The Funds are actively managed with a long-term perspective. On average, our senior portfolio managers have worked for Evli for 10 years and have 20 years' industry experience.

CORPORATE BOND AND OTHER FIXED INCOME

GLOBAL EQUITIES

NORDIC EQUITIES

4. Select the file “**Fund NAVS’s (CSV file)**” at the end of the page.

Fund NAVs

Fund	NAV	Return % 1Y	Vol. date	Manager	Return % 3Y	Return % 5Y	Return % 10Y
Corporate bond and other fixed income funds							
Evli Corporate Bond Fund	101 217 EUR	0.01	01.06.2014	★★★★	2.91	3.79	6.21
Evli Corporate Bond Fund - Short	192 238 EUR	0.00	01.06.2014	★★★★	2.88	3.76	6.20
Evli Emerging Markets Credit	108 114 EUR	2.05	01.06.2014	★★★★	3.43	4.32	7.21
Evli Euro Short-Term	24 712 EUR	0.01	01.06.2014	★★★★	3.48	4.37	7.22
Evli Euro Corporate Bond	18 393 EUR	0.01	01.06.2014	★★★★	1.11	1.91	3.31
Evli Global Bond	130 222 EUR	0.00	01.06.2014	★★★★	1.67	2.52	4.15
Evli Euro Government Bond	48 817 EUR	0.02	01.06.2014	★★★★	3.78	4.65	7.46
Evli Corporate Bond	27 847 EUR	0.01	01.06.2014	★★★★	2.97	3.88	6.76
Global equities							
Evli Europe	112 710 EUR	0.88	01.06.2014	★★★★	10.81	12.82	14.80
Evli Asia	112 247 EUR	0.19	01.06.2014	★★★★	11.21	13.22	15.20
Evli Global	124 521 EUR	0.62	01.06.2014	★★★★	10.21	12.22	14.20
Evli Global	17 848 EUR	0.19	01.06.2014	★★★★	8.78	10.79	12.78
Evli Global	206 111 EUR	0.19	01.06.2014	★★★★	11.21	13.22	15.20
Evli North America	215 181 EUR	0.81	01.06.2014	★★★★	8.87	10.88	12.86
Nordic equities							
Evli Nordic Equity	1 214 201 EUR	7.20	01.06.2014	★★★★	10.21	12.22	14.20
Evli Nordic Equity	2 071 410 EUR	0.28	01.06.2014	★★★★	11.81	13.82	15.80
Evli Nordic Equity	1 075 204 EUR	0.10	01.06.2014	★★★★	8.78	10.79	12.78
Evli Nordic Equity	393 339 EUR	0.16	01.06.2014	★★★★	10.21	12.22	14.20
Evli Nordic Equity	88 488 EUR	0.48	01.06.2014	★★★★	10.21	12.22	14.20
Equity factors							
Evli Equity Factor	100 230 EUR	0.01	01.06.2014	★★★★	0.26	0.27	0.28
Emerging markets							
Evli Emerging Markets	195 428 EUR	0.19	01.06.2014	★★★★	8.78	10.79	12.78
Evli Emerging Markets	124 428 EUR	0.19	01.06.2014	★★★★	8.78	10.79	12.78
Asset allocation solutions							
Evli Global	7 204 EUR	0.27	01.06.2014	★★★★	6.81	7.18	7.55
Evli Global	76 234 EUR	0.17	01.06.2014	★★★★	7.91	8.28	8.65
Evli Global	164 234 EUR	0.18	01.06.2014	★★★★	8.28	8.65	9.02
Evli Global	182 711 EUR	0.21	01.06.2014	★★★★	8.65	9.02	9.39



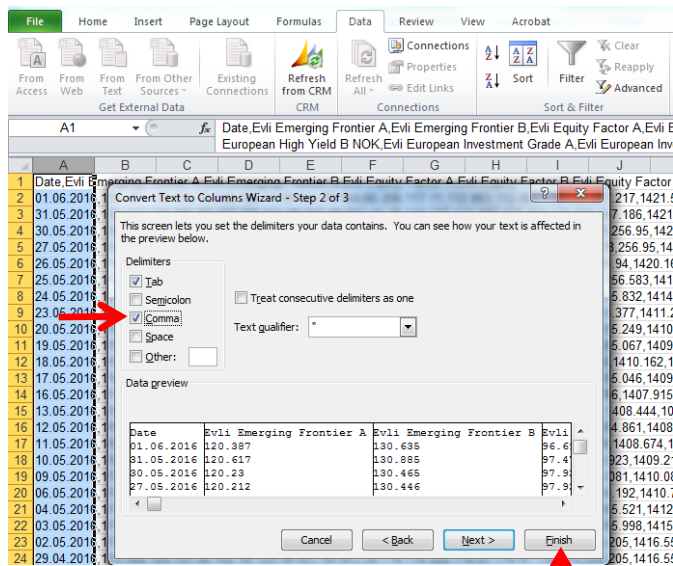
6. In the spreadsheet, select column A.

	A	B	C	D	E	F
1	Date,Evli Emerging Frontier A,Evli Emerging Frontier B,Evli Equ					
2	01.06.2016,	120.387,	130.635,	96.696,	100.73,	99.044,
3	31.05.2016,	120.617,	130.885,	97.477,	101.544,	99.843,
4	30.05.2016,	120.23,	130.465,	97.928,	102.014,	100.302,
5	27.05.2016,	120.212,	130.446,	97.928,	102.014,	100.302,
6	26.05.2016,	119.766,	129.961,	97.627,	101.7,	99.993,
7	25.05.2016,	119.993,	130.208,	97.355,	101.417,	99.713,
8	24.05.2016,	120.02,	130.237,	96.772,	100.809,	99.115,
9	23.05.2016,	118.851,	128.968,	94.936,	98.896,	97.234,
10	20.05.2016,	118.888,	129.009,	94.995,	98.958,	97.292,
11	19.05.2016,	118.597,	128.693,	93.911,	97.829,	96.181,
12	18.05.2016,	118.401,	128.48,	94.565,	98.51,	96.85,
13	17.05.2016,	118.423,	128.504,	93.981,	97.902,	96.252,
14	16.05.2016,	117.959,	128.93,	838.97,	753.96,	104.96,
15	13.05.2016,	118.695,	128.799,	93.8,	97.713,	96.062,
16	12.05.2016,	118.697,	128.801,	93.448,	97.347,	95.702,
17	11.05.2016,	118.767,	128.877,	93.721,	97.631,	95.98,
18	10.05.2016,	118.499,	128.587,	94.1,	98.026,	96.368,

7. Select: “Data” → “Text to Columns” → “Next”

The screenshot shows the Excel 'Data' tab with the 'Text to Columns' button highlighted. A dialog box titled 'Convert Text to Columns Wizard - Step 1 of 3' is open. The 'Delimited' radio button is selected under 'Choose the file type that best describes your data:'. The 'Next >' button is also highlighted with a red arrow.

8. Tick the **“Comma”** box and click **“Finish.”**



The fund names and series will be displayed on the top line of the spreadsheet and the dates in the first column on the left.

You will now be able to easily browse the values of Evli’s funds from the day each fund commenced operations.

Date	Evli Emerging Frontier A	Evli Emerging Frontier B	Evli Equity Factor A	Evli Equity Factor B	Evli Equity Factor IA	Evli Equity Factor IB	Evli Europe A	Evli Europe B	Evli GEM A	Evli GEM B
01.06.2016	120.387	130.635	96.696	100.73	99.044	99.044	60.256	117.11	112.863	112.863
31.05.2016	120.617	130.885	97.477	101.544	99.843	99.843	60.78	118.127	113.397	113.397
30.05.2016	120.23	130.465	97.928	102.014	100.302	100.302	60.886	118.334	113.549	113.549
27.05.2016	120.212	130.446	97.928	102.014	100.302	100.302	60.886	118.334	113.115	113.115
26.05.2016	119.766	129.961	97.527	101.7	99.993	99.993	60.739	118.048	112.493	112.493
25.05.2016	119.993	130.208	97.355	101.417	99.713	99.713	60.529	117.639	112.526	112.526
24.05.2016	120.02	130.237	96.772	100.809	99.115	99.115	60.194	116.988	111.728	111.728
23.05.2016	118.851	128.968	94.936	98.896	97.234	97.234	59.482	115.604	110.733	110.733
20.05.2016	118.888	129.009	94.995	98.958	97.292	97.292	59.282	115.216	110.256	110.256
19.05.2016	118.597	128.693	93.911	97.829	96.181	96.181	58.583	113.857	109.435	109.435
18.05.2016	118.401	128.48	94.565	98.51	96.85	96.85	58.955	114.58	110.243	110.243
17.05.2016	118.423	128.504	93.981	97.902	96.252	96.252	58.567	113.827	110.204	110.204
16.05.2016	117.959	128	93.838	97.753	96.104	96.104	58.385	113.473	109.826	109.826
15.05.2016	118.695	128.799	93.8	97.713	96.062	96.062	58.306	113.319	110.26	110.26
12.05.2016	118.697	128.801	93.448	97.347	95.702	95.702	58.103	112.924	110.701	110.701
11.05.2016	118.767	128.877	93.721	97.631	95.98	95.98	58.263	113.236	110.53	110.53
10.05.2016	118.499	128.587	94.1	98.026	96.368	96.368	58.572	113.836	110.427	110.427
09.05.2016	117.43	127.426	93.504	97.405	95.756	95.756	58.157	113.029	109.515	109.515
06.05.2016	117.922	127.961	93.082	96.965	95.322	95.322	57.928	112.584	109.799	109.799
04.05.2016	117.145	127.117	92.915	96.791	95.149	95.149	57.861	112.454	110.236	110.236
03.05.2016	117.115	127.085	93.535	97.438	95.784	95.784	57.978	112.681	111.458	111.458
02.05.2016	117.624	127.637	94.582	98.528	96.853	96.853	58.774	114.228	114.47	114.47
29.04.2016	119.668	129.747	94.582	98.528	96.853	96.853	58.774	114.228	114.47	114.47
28.04.2016	120.264	130.491	96.047	100.054	98.351	98.351	59.367	115.381	116.008	116.008
27.04.2016	120.193	130.424	95.89	99.89	98.19	98.19	59.25	115.153	115.788	115.788
26.04.2016	119.913	129.98	95.5	99.484	97.779	97.779	58.996	114.66	116.524	116.524
25.04.2016	120.026	130.243	95.196	99.168	97.478	97.478	58.777	114.234	116.733	116.733
22.04.2016	121.23	131.55	95.356	99.334	97.639	97.639	59.054	114.773	117.335	117.335
21.04.2016	120.617	130.885	95.473	99.456	97.750	97.750	59.214	115.083	117.439	117.439
30.03.2016	120.018	130.234	96.106	100.116	98.406	98.406	59.899	116.398	117.695	117.695
32.04.2016	119.317	129.474	96.046	100.053	98.343	98.343	60.031	116.672	117.527	117.527
33.04.2016	117.245	127.226	94.955	98.916	97.225	97.225	59.106	114.873	116.804	116.804
34.04.2016	117.086	127.066	94.752	98.705	97.015	97.015	58.975	114.62	116.938	116.938
35.04.2016	119.757	129.952	95.182	99.153	97.455	97.455	59.094	114.85	117.296	117.296
36.04.2016	119.492	129.665	95.142	99.112	97.413	97.413	59.221	115.097	116.79	116.79
37.04.2016	118.236	128.201	93.421	97.319	96.65	96.65	58.163	113.042	114.637	114.637
38.04.2016	117.334	127.322	93.117	97.002	95.339	95.339	57.823	112.381	113.723	113.723
39.04.2016	117.511	127.515	92.845	96.719	95.058	95.058	57.735	112.209	112.81	112.81
40.04.2016	117.245	127.226	91.782	95.811	93.968	93.968	56.962	110.706	111.859	111.859
41.04.2016	117.086	127.066	92.537	96.988	94.741	94.741	57.381	111.522	111.919	111.919
42.04.2016	116.665	126.596	92.034	95.874	94.225	94.225	57.26	111.286	111.978	111.978
43.04.2016	116.963	126.92	93.437	97.335	95.66	95.66	58.008	112.739	114.466	114.466
44.04.2016	116.425	126.336	93.209	97.098	95.425	95.425	57.805	112.346	114.466	114.466
45.03.2016	116.848	126.796	94.217	98.148	96.456	96.456	58.553	113.8	115.086	115.086
46.03.2016	116.608	126.534	95.012	98.976	97.269	97.269	59.011	114.69	114.938	114.938
47.03.2016	115.921	125.79	93.686	97.595	95.911	95.911	57.98	112.685	113.659	113.659
48.03.2016	114.996	124.785	92.102	96.866	95.309	95.309	57.546	111.842	113.061	113.061
49.03.2016	114.695	124.459	94.225	98.157	96.458	96.458	58.467	113.632	113.954	113.954
50.03.2016	114.305	124.036	94.156	98.084	96.386	96.386	58.648	113.985	114.817	114.817
51.03.2016	115.552	125.389	94.192	98.122	96.423	96.423	58.685	114.056	114.546	114.546
52.03.2016	114.857	124.635	94.465	98.406	96.699	96.699	58.756	114.193	114.296	114.296
53.03.2016	114.708	124.472	94.121	98.048	96.347	96.347	58.716	114.117	114.78	114.78
16.03.2016	114.265	124.027	94.179	97.958	96.294	96.294	58.771	114.165	114.971	114.971